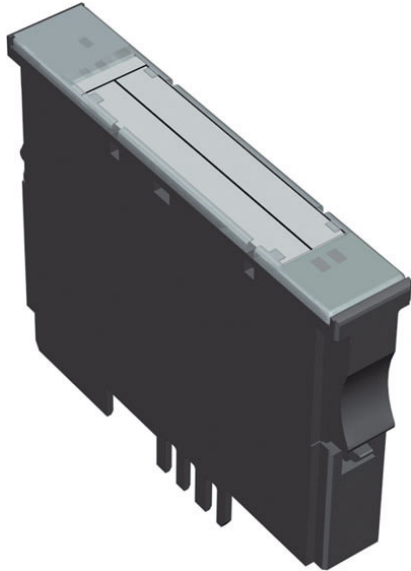


Type: **XN-2DI-24VDC-P**
 Article No.: **225169**



Ordering information			
Description			Digital input
Description			2 digital inputs/24 V DC Positive switching
For use with base module			XN-S3T-SBB XN-S3S-SBB XN-S4T-SBBC XN-S4S-SBBC

General			
Standards			DIN 19245 IEC/EN 61131 IEC/EN 60068-2 EN 50082-2
Bus			PROFIBUS DP, CANopen, DeviceNet
Potential isolation			Yes, through optocoupler
Ambient temperature		°C	-0/+55
Ambient temperature, Storage		°C	-25/+85
Relative humidity		%	5 – 95 (indoor), level RH-2, non-condensing (at 45 °C storage)
Noxious gas			
SO ₂		ppm	10 (rel. humidity < 75 %, non-condensing)

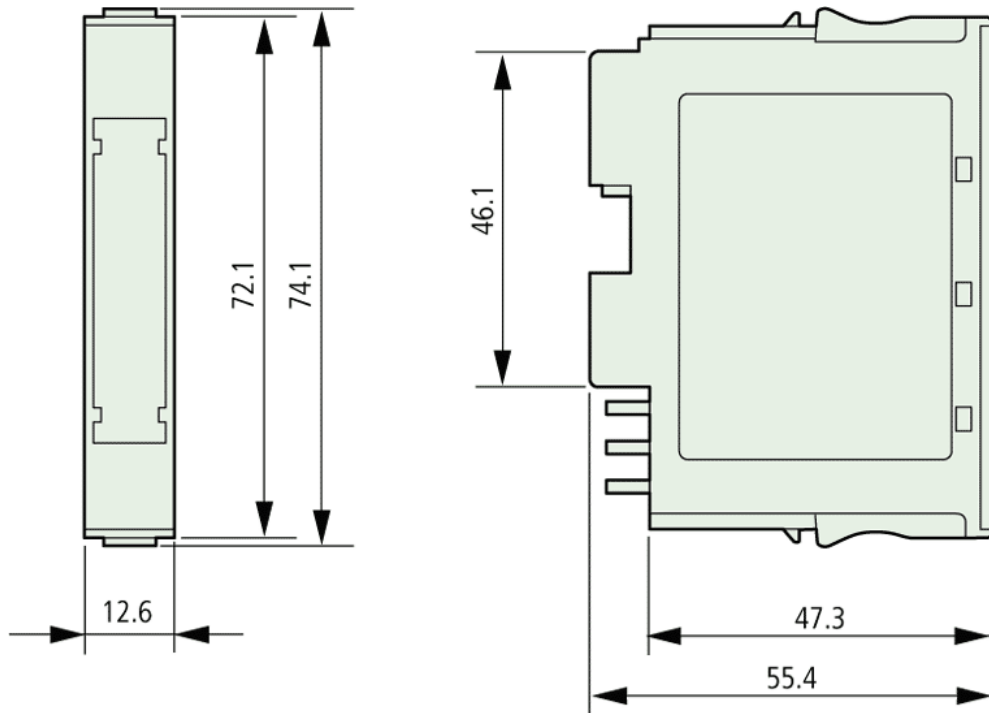
H ₂ S		ppm	1.0 (rel. humidity < 75 %, non-condensing)
Vibrations (IEC/EN 60068-2-6)			According to IEC/EN 61131
Mechanical shock resistance (IEC 60068-2-27)			According to IEC 60068-2-27
Continuous shock resistance (IEC/EN 60068-2-29)			According to IEC 60068-2-29
Drop and topple			According to IEC 60068-2-31, free fall according to IEC 60068-2-32
Protection type			IP 20
Type test			to EN 61131-2

Modules

Channels		Number	2
Rated voltage through supply terminal	U_L		24 V DC
Rated current consumption from supply terminal	I_L	mA	20
Rated current consumption from module bus	I_{MB}	mA	28
Power loss		W	Normally 1
Input voltage			
Nominal input voltage		V DC	24 V DC
Low level	U_L		-30/+5 V
High level	U_H		11 – 30 V
Input current			
Low level	I_L		0 – 1.5 mA
High level	I_H		2 – 10 mA
Input delay			
$t_{\text{Rising edge}}$		μs	200
$t_{\text{Falling edge}}$		μs	200
Output voltage			
High level	U_H		11 – 30 V
Base modules			
without C connection			2-/3-wire XN-S3x-SBB 2-wire proximity switches (Bero® initiators) can be attached, with a permissible quiescent current up to 1.5 mA.
with C connection			4-wire XN-S4x-SBBC

Dimensions

Dimensions



Moeller GmbH, Hein-Moeller-Str. 7-11, D-53115 Bonn
E-Mail: catalog@moeller.net, Internet: www.moeller.net, <http://catalog.moeller.net>
Copyright 2006 by Moeller GmbH. Subject to modifications. HPL-C2006GB-INT V2.3